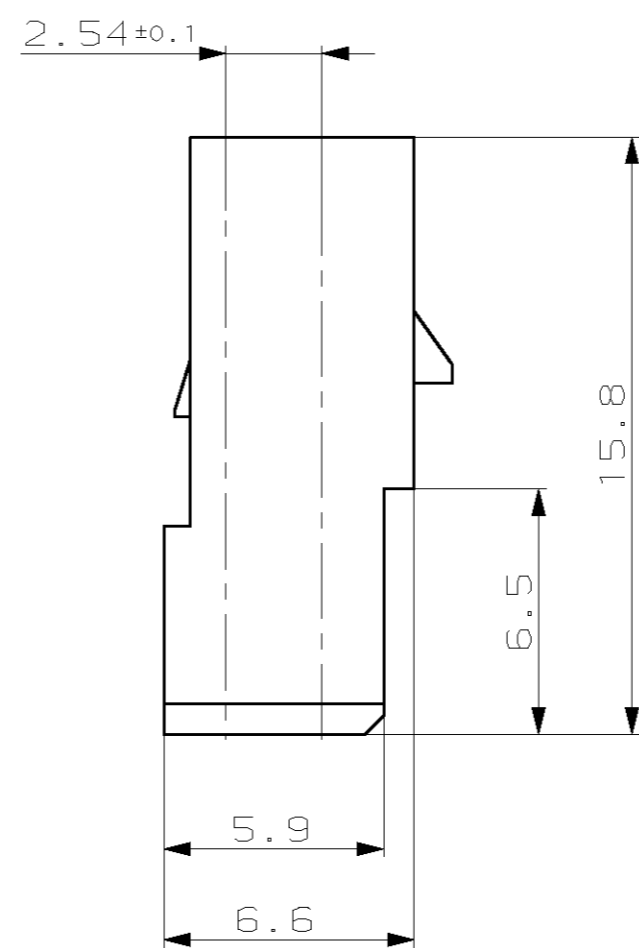
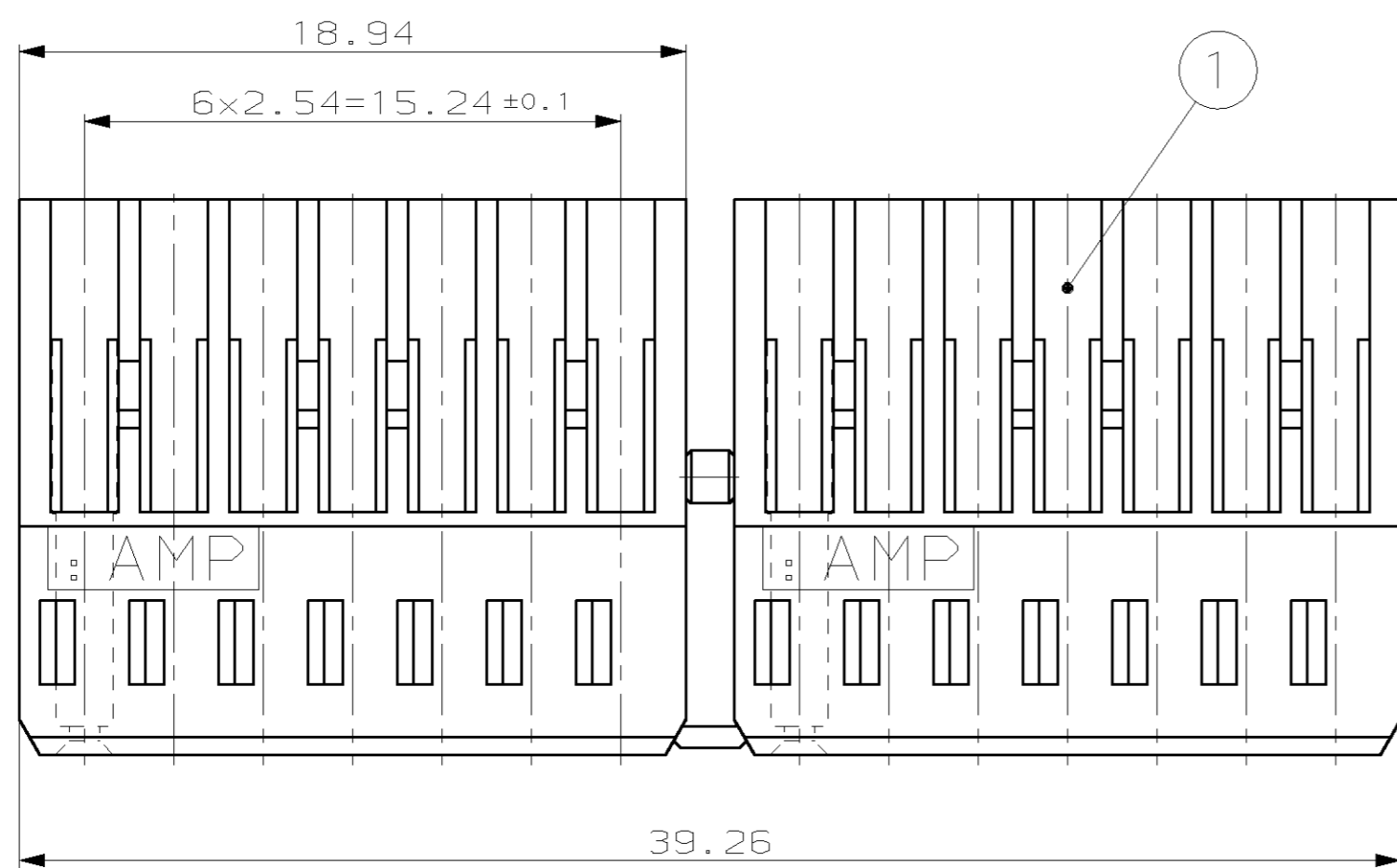
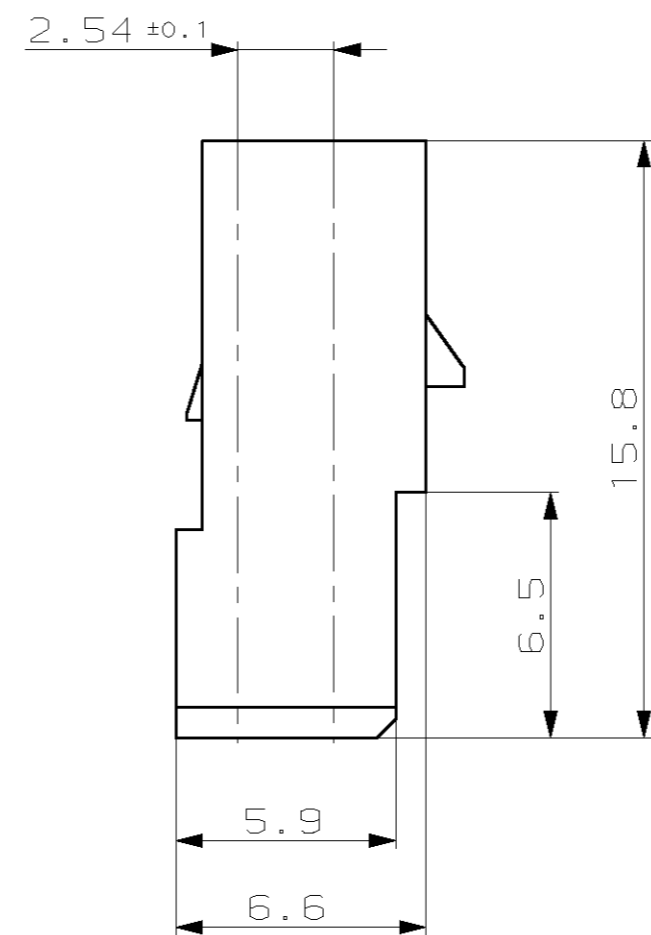
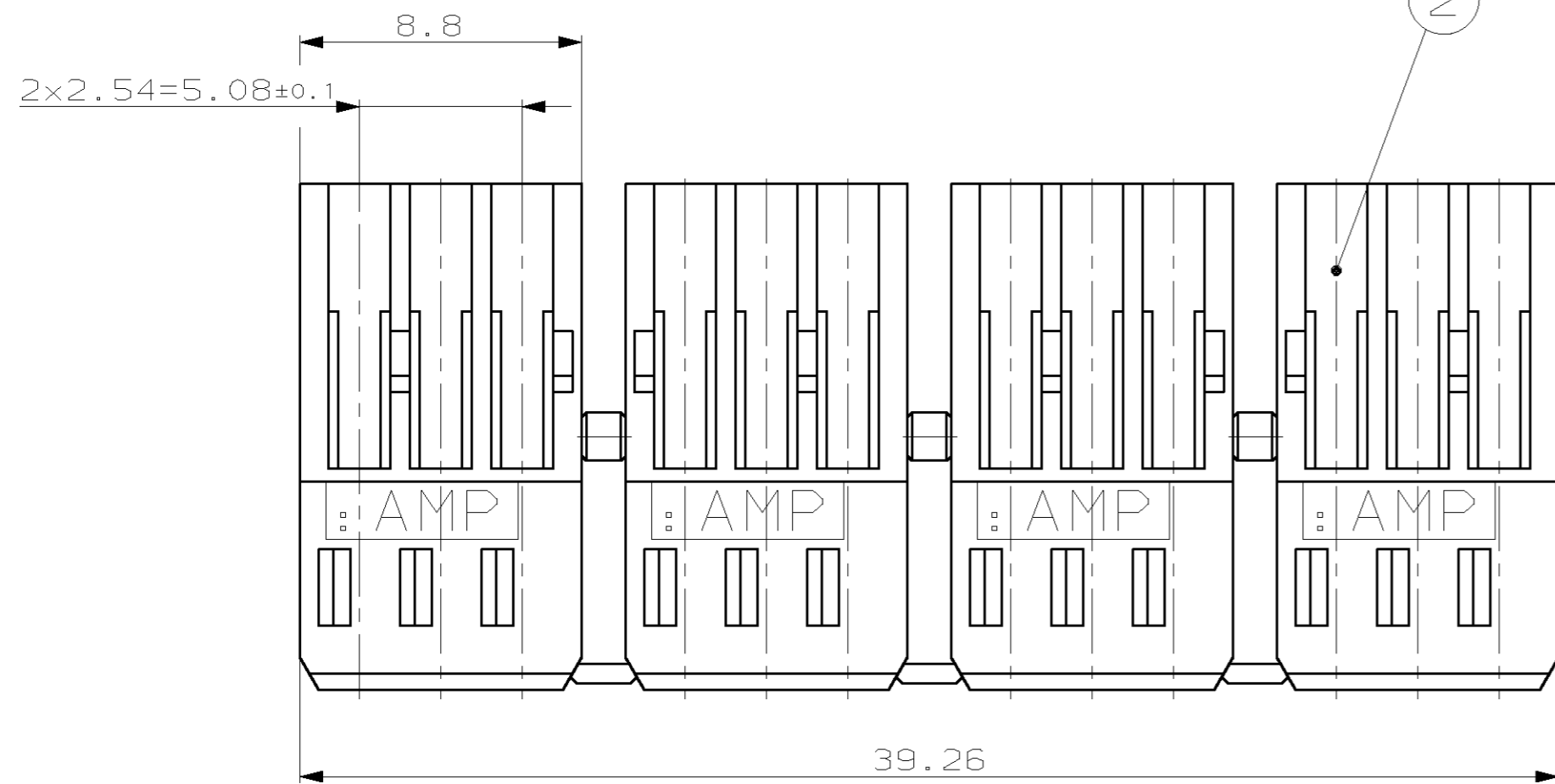


THIS DRAWING IS UNPUBLISHED.
 VERTRAULICHE UNVERÖFFENTLICHTE ZEICHNUNG
 RELEASED FOR PUBLICATION
 FREI FÜR VERÖFFENTLICHUNG
 (C) COPYRIGHT 19- BY AMP INCORPORATED. ALL RIGHTS RESERVED.
 ALLE RECHTE VORBEHALTEN
 MATED WITH:
 PASSEND ZU:

| | | | | | | | |
|--------------|------|-----------------------|-----|------------|-----------|------|------|
| LOC | DIST | REVISIONS | | | DATE | DWN | APVD |
| AI | - | P | LTR | ÄNDERUNGEN | 12-DEC-03 | MAH. | ZITZ |
| PROJEKT NR.: | | DESCRIPTION | | | | | |
| - | | BESCHREIBUNG | | | | | |
| | | NEW DRAWING PUBLISHED | | | | | |



| CUSTOMER PART NO | AMP PART NO | REV. | PCS. | MATERIAL | SURFACE COLOR | DESCRIPTION | ITEM NO |
|------------------|-------------|------|------|------------|---------------|-----------------|---------|
| - | 1-928038-2 | - | - | PBTP 20 GV | SCHWARZ | 2 x 3 POL. (4x) | 2 |
| - | 1-928038-1 | - | - | PBTP 20 GV | GRAU | 2 x 3 POL. (4x) | 2 |
| - | 928038-2 | - | - | PBTP 20 GV | SCHWARZ | 2 x 7 POL. (2x) | 1 |
| - | 928038-1 | - | - | PBTP 20 GV | GRAU | 2 x 7 POL. (2x) | 1 |

THIS DRAWING IS A CONTROLLED DOCUMENT FOR AMP INCORPORATED. IT IS SUBJECT TO CHANGE AND THE CONTROLLING ENGINEERING ORGANIZATION SHOULD BE CONTACTED FOR THE LATEST REVISION. DIESES ZEICHNUNGS-DOKUMENT WIRD DURCH AMP INCORPORATED KONTROLLIERT. ÄNDERUNGEN, DIE DEN TECHNISCHEN FORTSCHRITT DIENEN, SIND VORBEHALTEN. DEN JEWELIGS LETZTSTÄNDIGEN ÄNDERUNGSSTAND ERFAHREN SIE AUF ANFRAGE.

OTHERWISE SPECIFIED, ALLGEMEINTOLERANZEN
 n. 150 8015
 n. 150 2768 - mH - E
 n. DIN 16901 - 140

TOLERANCES UNLESS OTHERWISE SPECIFIED:
 0 PLC ±
 1 PLC ±0.2
 2 PLC ±
 3 PLC ±
 ANGLES/WINKEL ±2°
 FINISH/OBERFLÄCHE/FARBE

| | | | |
|--------------------|--|-----------|---|
| DWN | Mahnke, B. | 12-DEC-03 | tyco Electronics AMP GmbH D - 64625 Bensheim |
| CHK | Zitz, A. | 15-DEC-03 | |
| APVD | Bleicher, M. | 16-DEC-03 | |
| NAME | | | |
| PRODUCT SPEC | 2x3 UND 2x7 POL. TAND SPRING MT BUCHSENGEHÄUSE | | |
| APPLICATION SPEC | | | |
| VERARBEITUNGSSPEZ. | | | |
| WEIGHT | | | |
| GEWICHT | | | |
| CUSTOMER DRAWING | /KUNDENZEICHNUNG | MASSSTAB | 5:1 |
| BLATT | 1 | OF | 1 |
| REV | D1 | | |